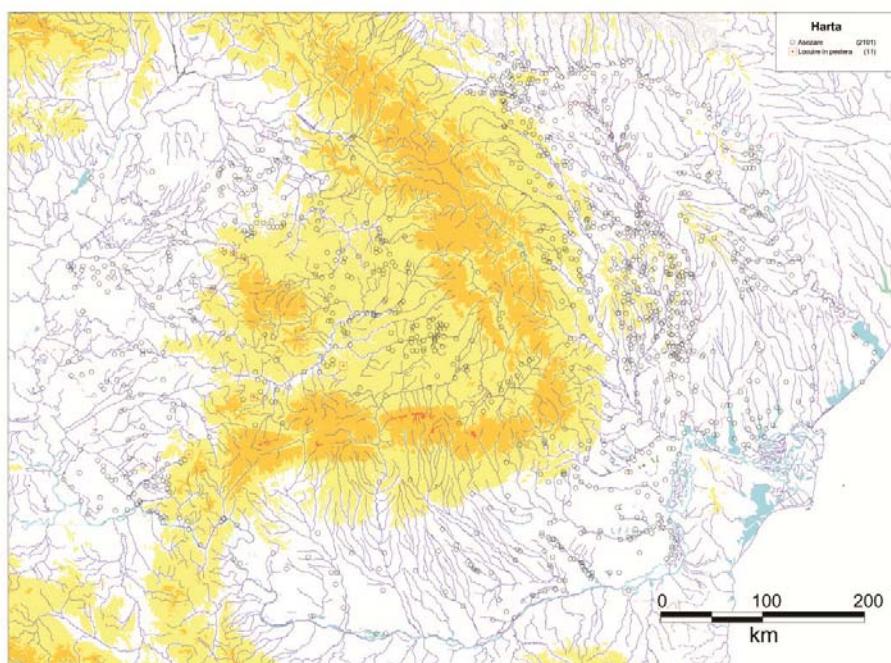


Sergiu Musteață

The Carpathian-Danube regions from the Eighth to the Tenth Century

The presentation will be focused on my recent research and data about archaeological sites distribution and development during 8-10 cc. in the Carpathian-Danube regions. The historical knowledge about this region is based on the archaeological discoveries because of the lack of the written sources referring to the realities from the North of the lower Danube of 8th – 9th c. Early medieval archaeological vestiges drew the attention of the historians already in the 19th century when in scientific circles appeared first data on some cemeteries from the 5th – 10th centuries, although their research began only after the Second World War. I account more than 2000 sites, mapped them and got an original picture of the actual knowledge about history of this region during 8-10 c. Based on actual statistics, I will present the situation of various sites: settlements, hilforts and cemeteries, coins and other known artefacts. From the total number of the archaeological sites of the 8th – 10th centuries attested on these regions only a small number, about 10% settlements and cemeteries (Map) were investigated through the salvage investigations and systematic researches. For a better knowing of this period we need both an integral publication of the archaeological discoveries and opening of new archaeological grounds while the comparison of these discoveries with archaeological realities from all the regions in the north of the Lower Danube will allow the reconstitution of the historical picture of the 8th – 10th centuries.



Map: The distribution of the settlements from Carpathian-Danubian-Dniestr region from 8th – 10th c.